

Remington Avenue

Streetscape Improvements

Public Presentation | July 14, 2022



Purpose: Build Truly Great Streets



Project Boundary



MacIntyre Middle School

Laurel Hill Cemetery

Scott Elementary School

Thomasville High School

Remington Avenue
Park and YMCA

Cherokee Lake Park

EAST JACKSON STREET

PINETREE BLVD

COVINGTON AVE.

REID STREET

SMITH AVENUE

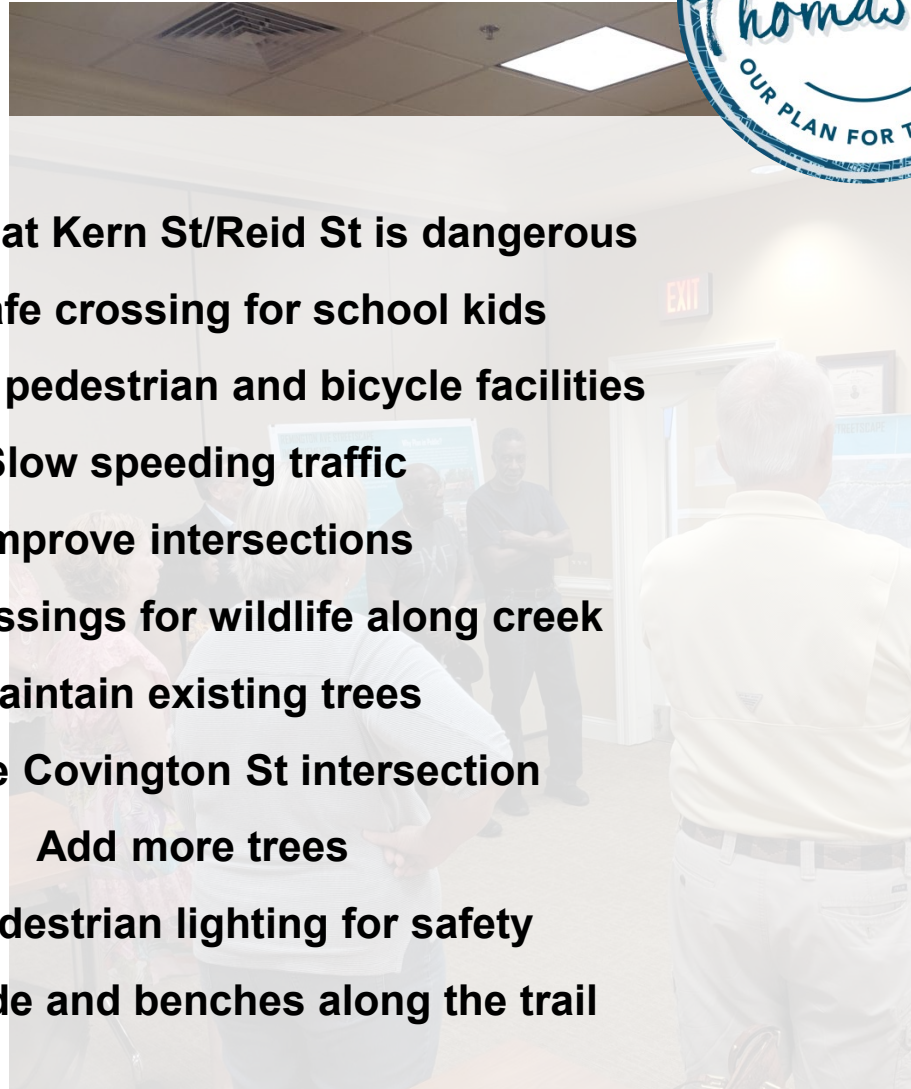
Why Plan in Public?



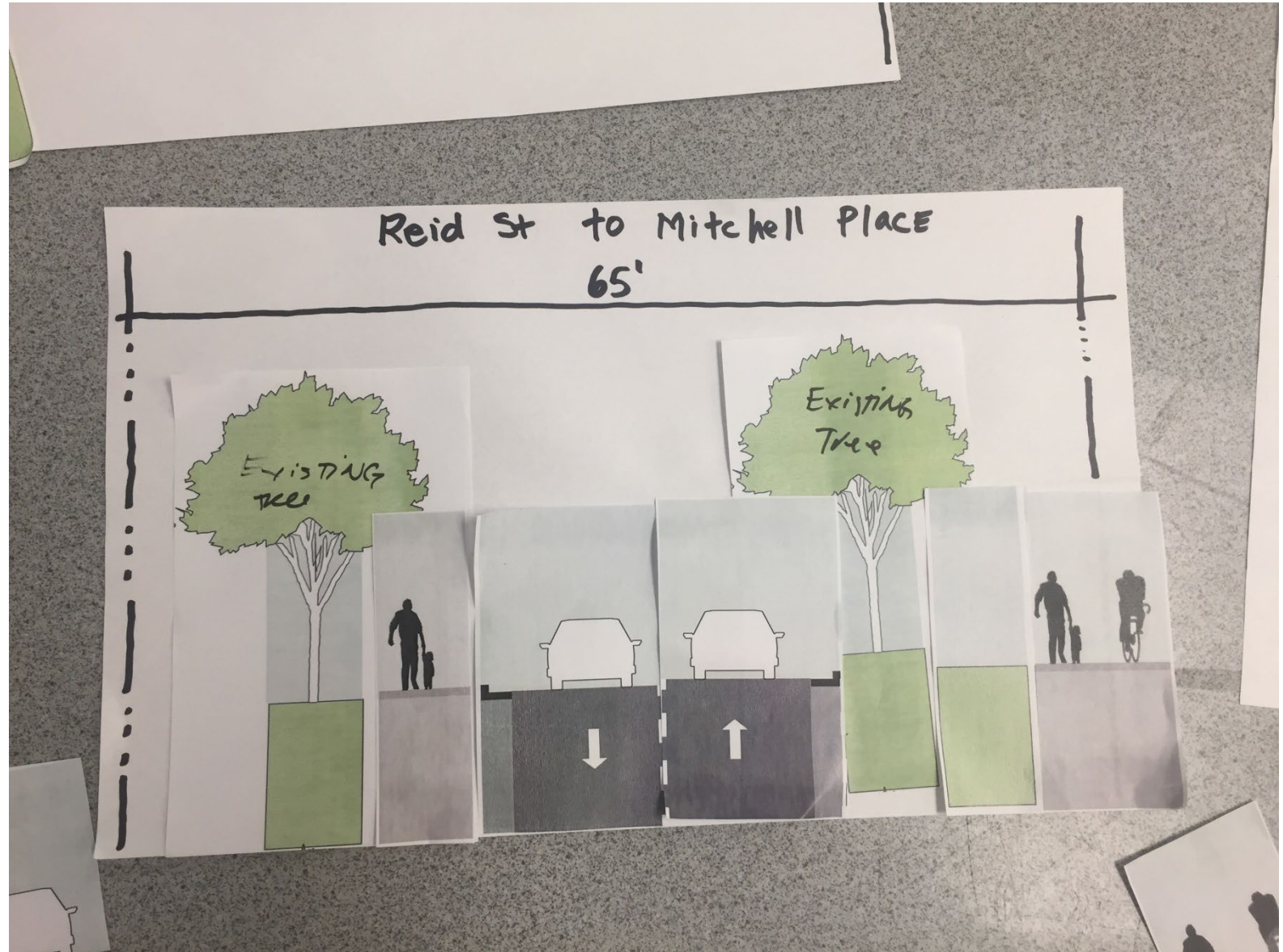
Why Plan in Public?



- Intersection at Kern St/Reid St is dangerous**
- Make safe crossing for school kids**
- Provide safe pedestrian and bicycle facilities**
- Slow speeding traffic**
- Improve intersections**
- Create crossings for wildlife along creek**
- Maintain existing trees**
- Improve Covington St intersection**
- Add more trees**
- Add pedestrian lighting for safety**
- Place shade and benches along the trail**



Why Plan in Public?





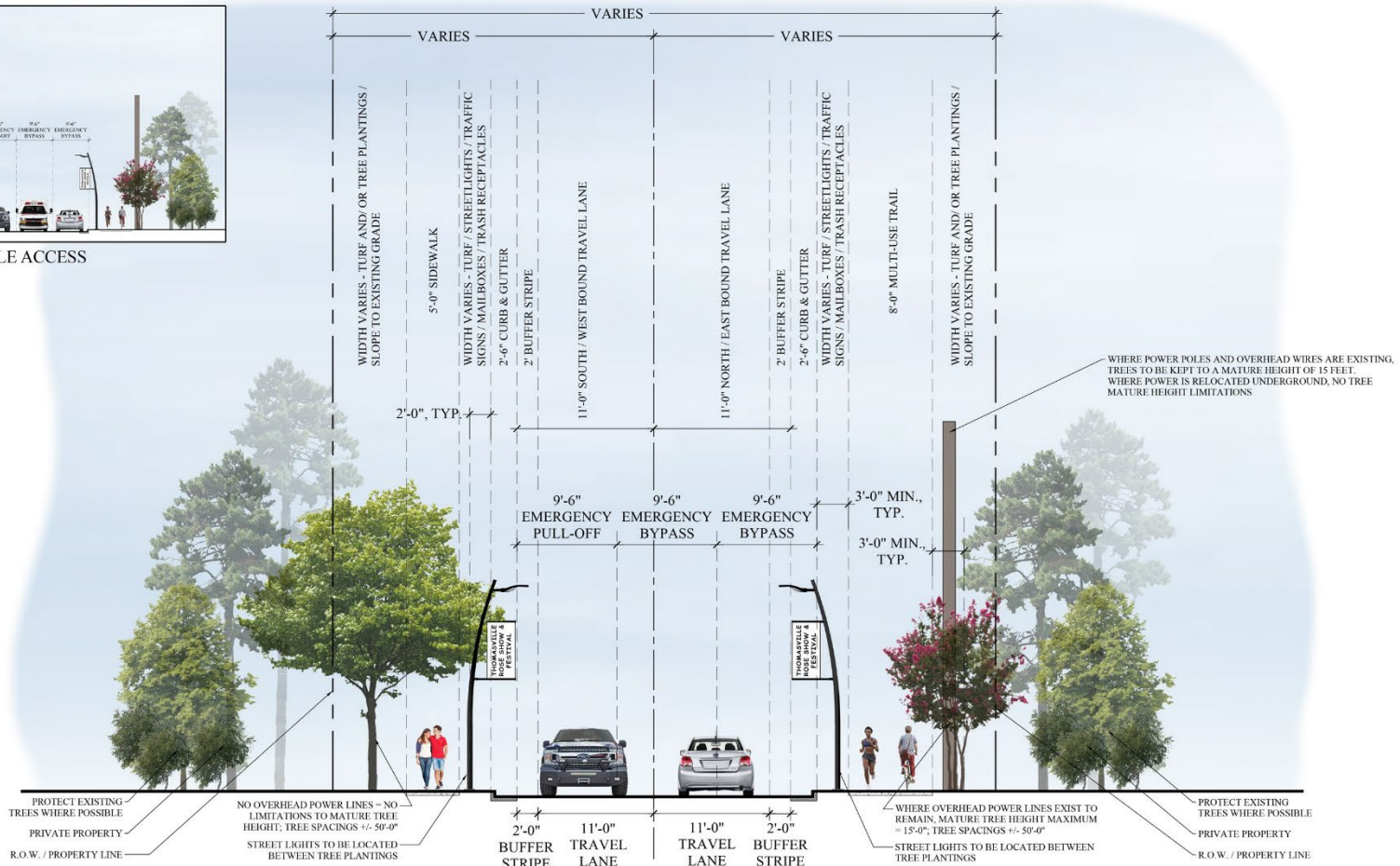
REMINGTON AVENUE STREETSCAPE

*DESIGN IS CONCEPTUAL & SUBJECT TO CHANGE.

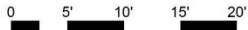
30% PLANS
NOVEMBER 12, 2020



EMERGENCY VEHICLE ACCESS



PROPOSED TYPICAL SECTION A - A'



SCALE: 1" = 5' - 0" (1" = 10' - 0" IF PRINTED AT 11X17)



Kimley»Horn



Landscape Details

High Rise Live Oak



Little Gem Magnolia



Nuttall Oak



Shumard Oak



Dahoon Holly



Weeping Yaupon



Natchez Crape Myrtle



Sweetbay Magnolia



Adagio Grass



Lily of the Nile



Yellow Coneflower



Belenda's Dream Rose



Reid and Remington Intersection – New Roundabout



New Canopy Trees

Landscaped Median

"Right Size" Kern St

Landscaped Roundabout

Safe Crosswalks

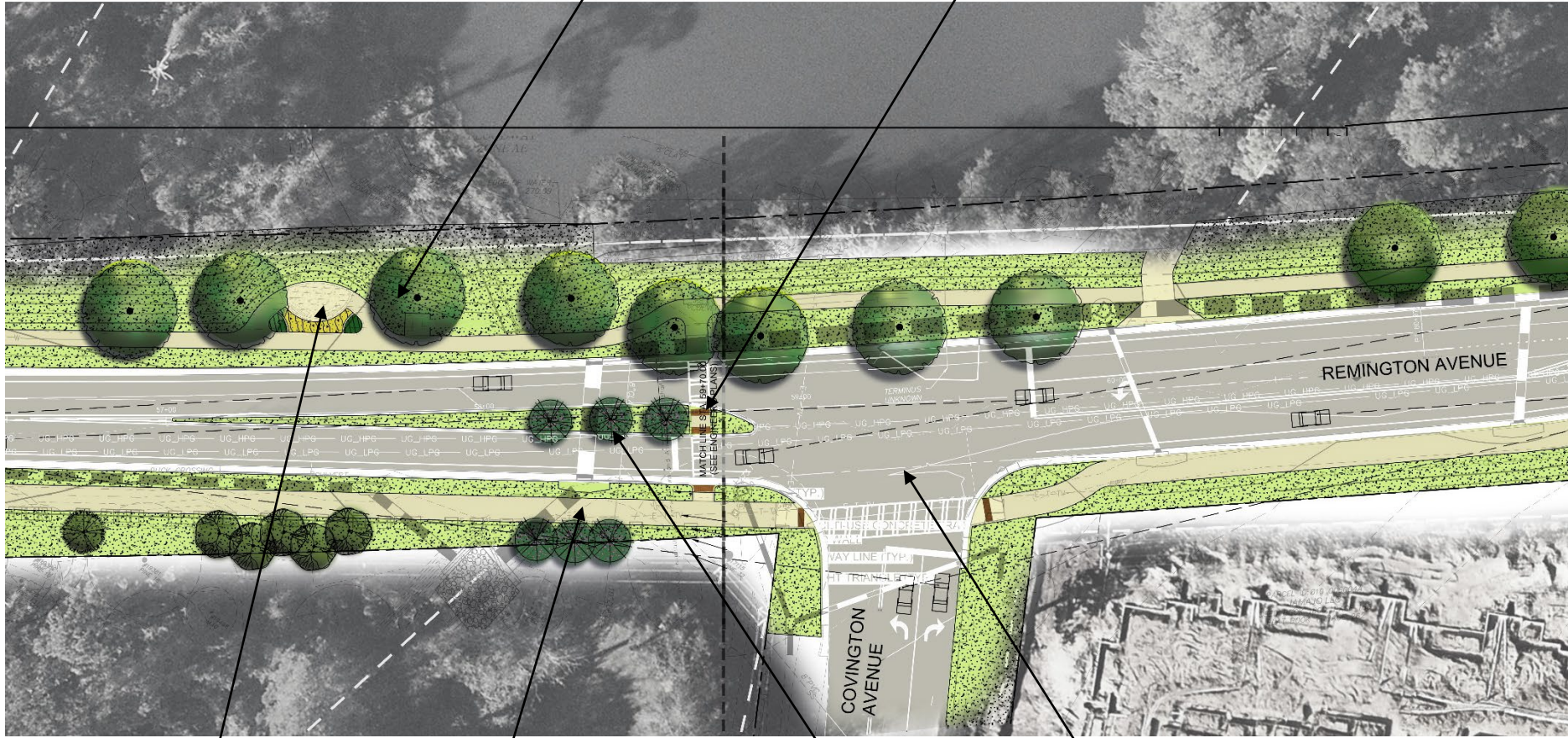
Multi-purpose trail

SOD (TYP.)
RIGHT-OF-WAY LINE
8' WIDE MULTI-USE
CONCRETE TRAIL
CLEAR SIGHT TRIANGLE

Covington Street Intersection

New Canopy Trees

Pedestrian Refuge Area



Landscaped overlook

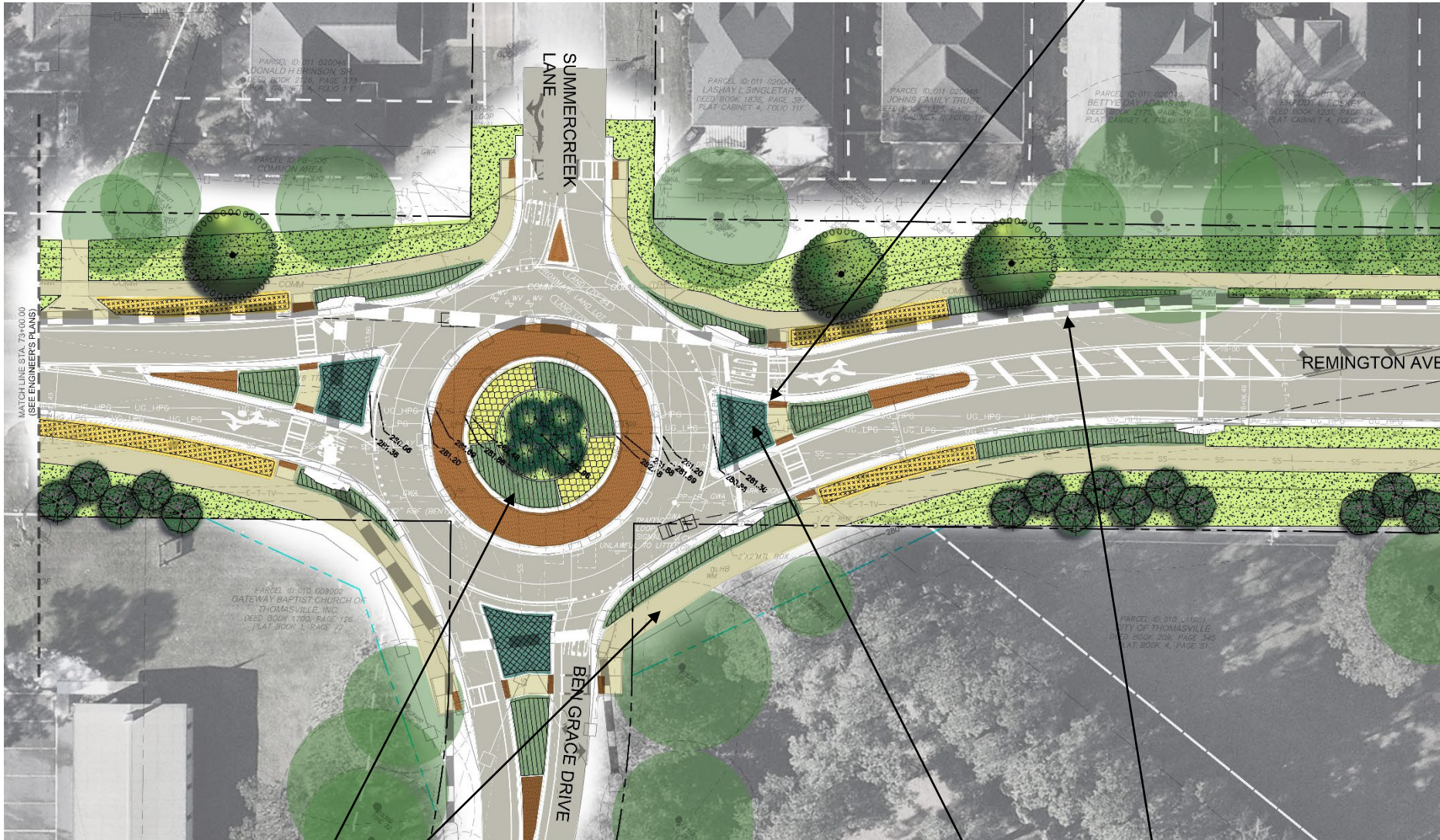
Multi-purpose trail

Landscaped Median

Traffic Signal

Ben Grace Drive: New Roundabout

Pedestrian Refuge Area



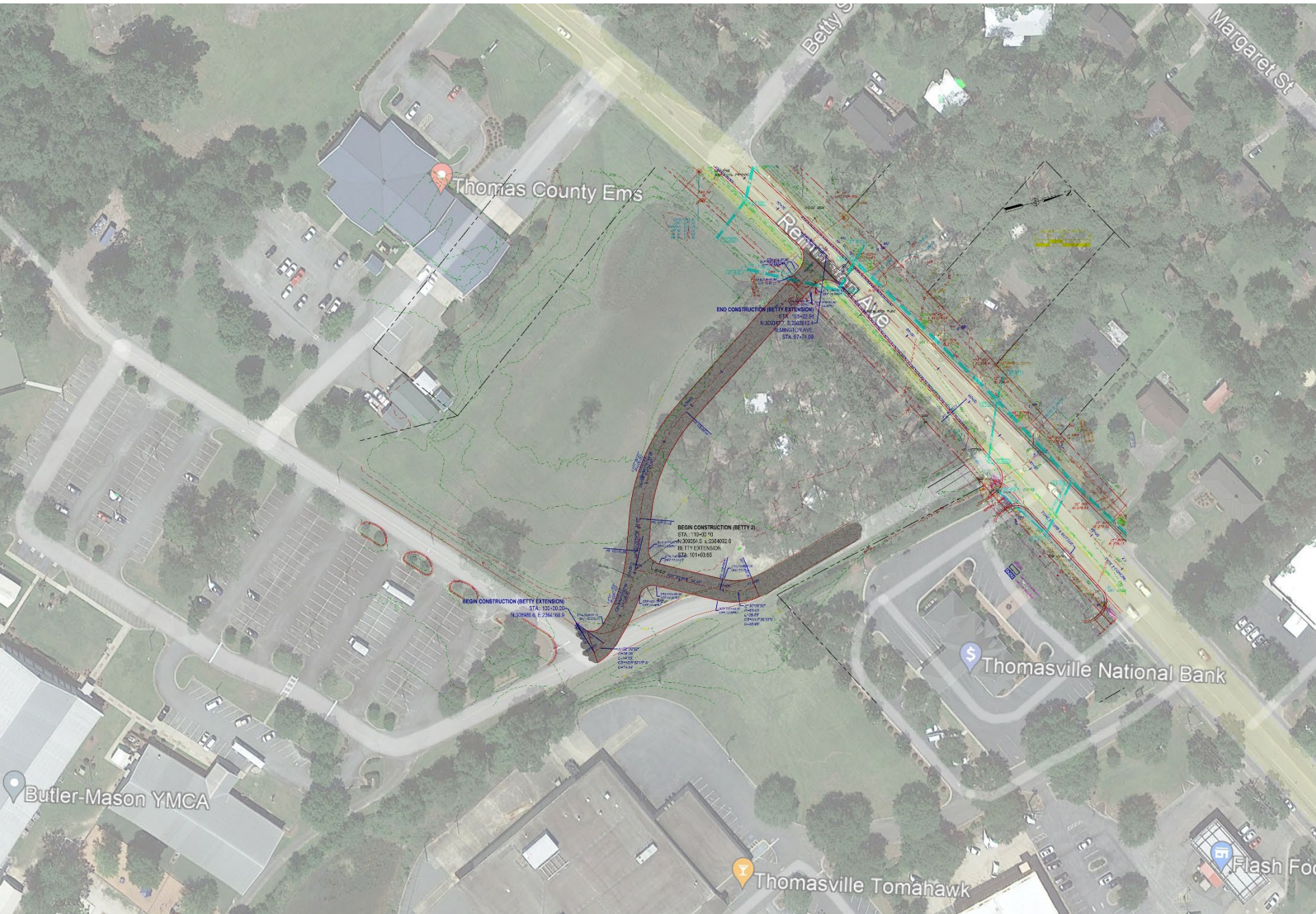
Landscaped Roundabout

Multi-purpose trail

New Canopy Trees

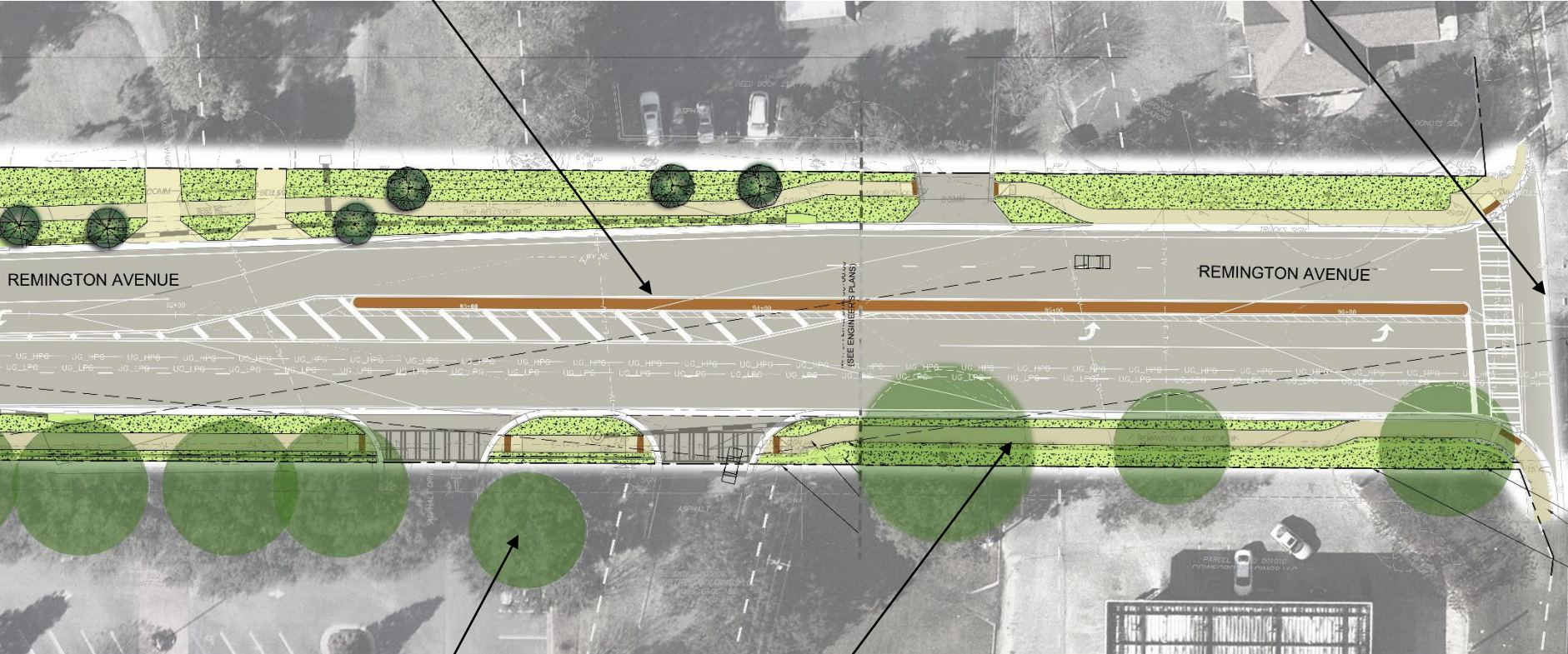
Landscaped Median

Remington Parking Lot / YMCA Entrance – relocated driveway



New Center Median

Project ends at Pinetree Blvd.



Preserve existing trees

New sidewalk

High Level Schedule



We are here

QUESTIONS?



JOIN US!

Remington Avenue Streetscape Project

UPDATE MEETING AND OPEN HOUSE

Join us for an update on the progress of the Remington Avenue Streetscape Project. Staff will be onsite with a presentation and to answer questions.

**Thursday, July 14 at the Remington EMS Station,
1202 Remington Avenue**

**Session One from 11:30 a.m. - 1:30 p.m.
Presentation begins at 12:00 p.m.**

**Session Two from 5:00 p.m. - 7:00 p.m.
Presentation begins at 5:30 p.m.**

Can't attend a meeting?

Join the Zoom Meeting at 5:30 p.m.

Meeting ID: 865 2559 9056
Passcode: 068737



For more information about the Remington Avenue Streetscape Project, please call Sherri Cain, Community Engagement Manager at (229) 227-4154 or email sherri.cain@thomasville.org. Project information and updates can also be found at thomasville.org/current-projects.