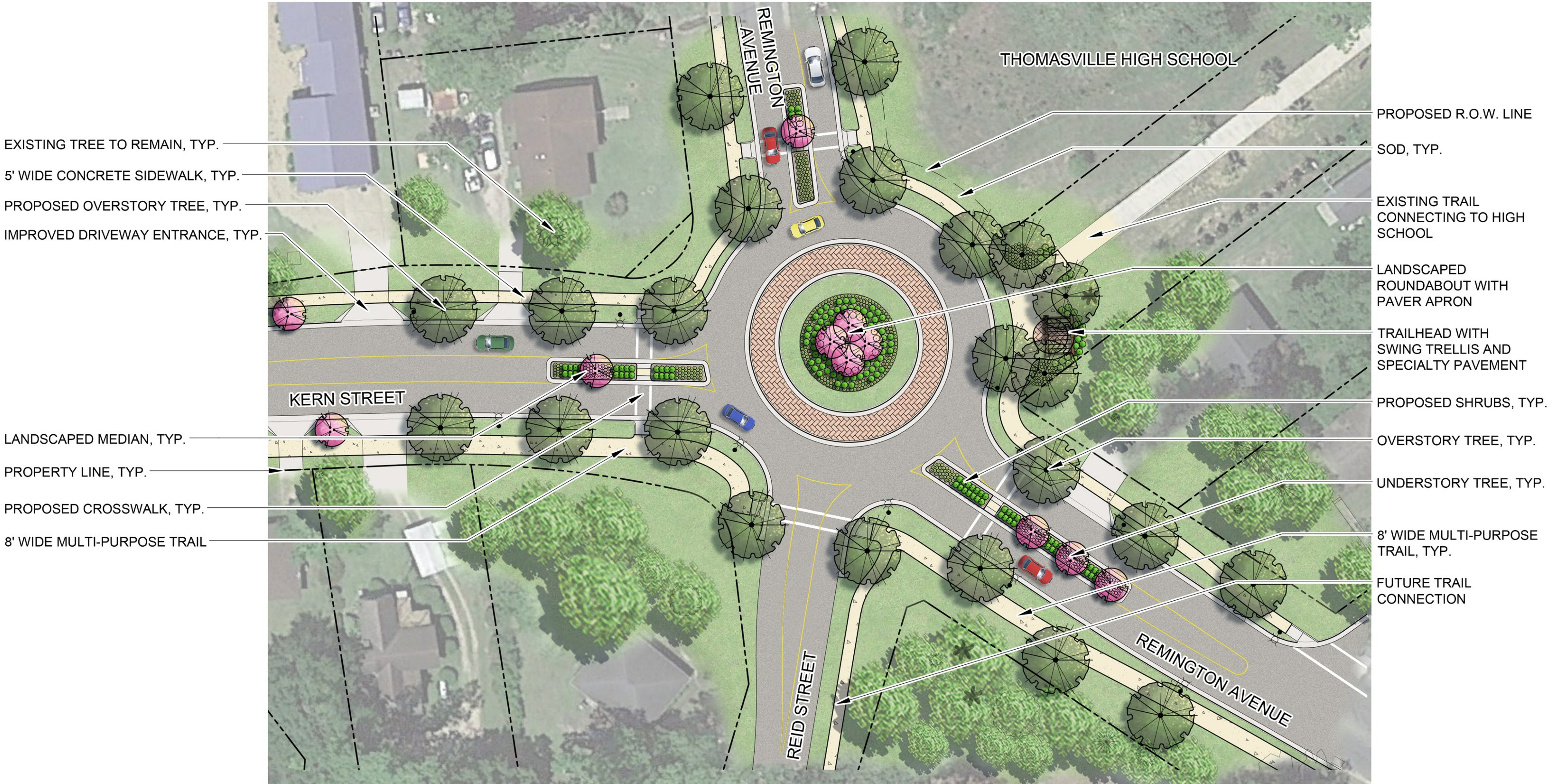


REMINGTON AVENUE STREETSCAPE

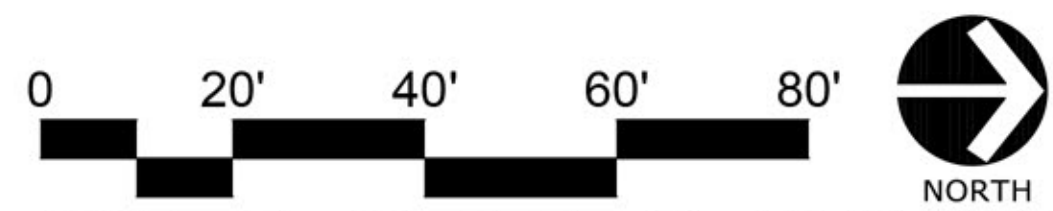
*DESIGN IS CONCEPTUAL & SUBJECT TO CHANGE.

30% PLANS

NOVEMBER 12, 2020



PROPOSED ROUNDABOUT AT CONVERGENCE OF REMINGTON/KERN/REID



SCALE: 1" = 20' - 0" (1" = 40' - 0" IF PRINTED AT 11X17)



Kimley»Horn

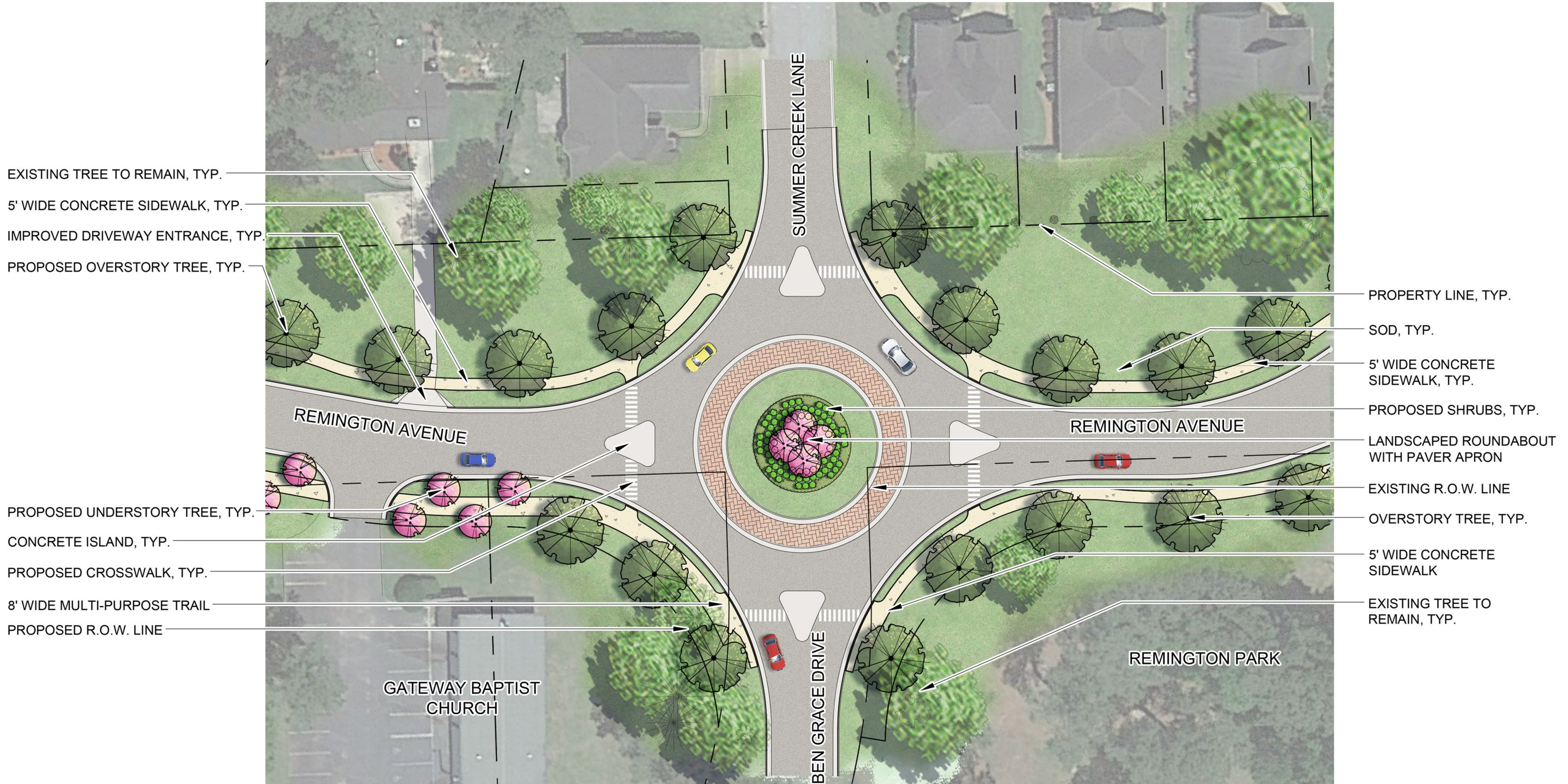


REMINGTON AVENUE STREETSCAPE

*DESIGN IS CONCEPTUAL & SUBJECT TO CHANGE.

30% PLANS

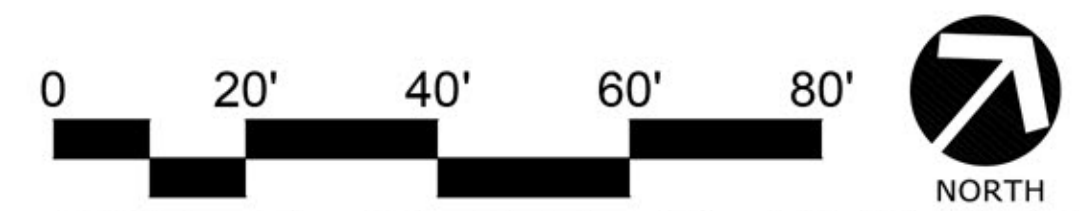
NOVEMBER 12, 2020



- EXISTING TREE TO REMAIN, TYP.
- 5' WIDE CONCRETE SIDEWALK, TYP.
- IMPROVED DRIVEWAY ENTRANCE, TYP.
- PROPOSED OVERSTORY TREE, TYP.
- PROPOSED UNDERSTORY TREE, TYP.
- CONCRETE ISLAND, TYP.
- PROPOSED CROSSWALK, TYP.
- 8' WIDE MULTI-PURPOSE TRAIL
- PROPOSED R.O.W. LINE

- PROPERTY LINE, TYP.
- SOD, TYP.
- 5' WIDE CONCRETE SIDEWALK, TYP.
- PROPOSED SHRUBS, TYP.
- LANDSCAPED ROUNDABOUT WITH PAVER APRON
- EXISTING R.O.W. LINE
- OVERSTORY TREE, TYP.
- 5' WIDE CONCRETE SIDEWALK
- EXISTING TREE TO REMAIN, TYP.

PROPOSED ROUNDABOUT AT INTERSECTION OF REMINGTON AVENUE & BEN GRACE DRIVE



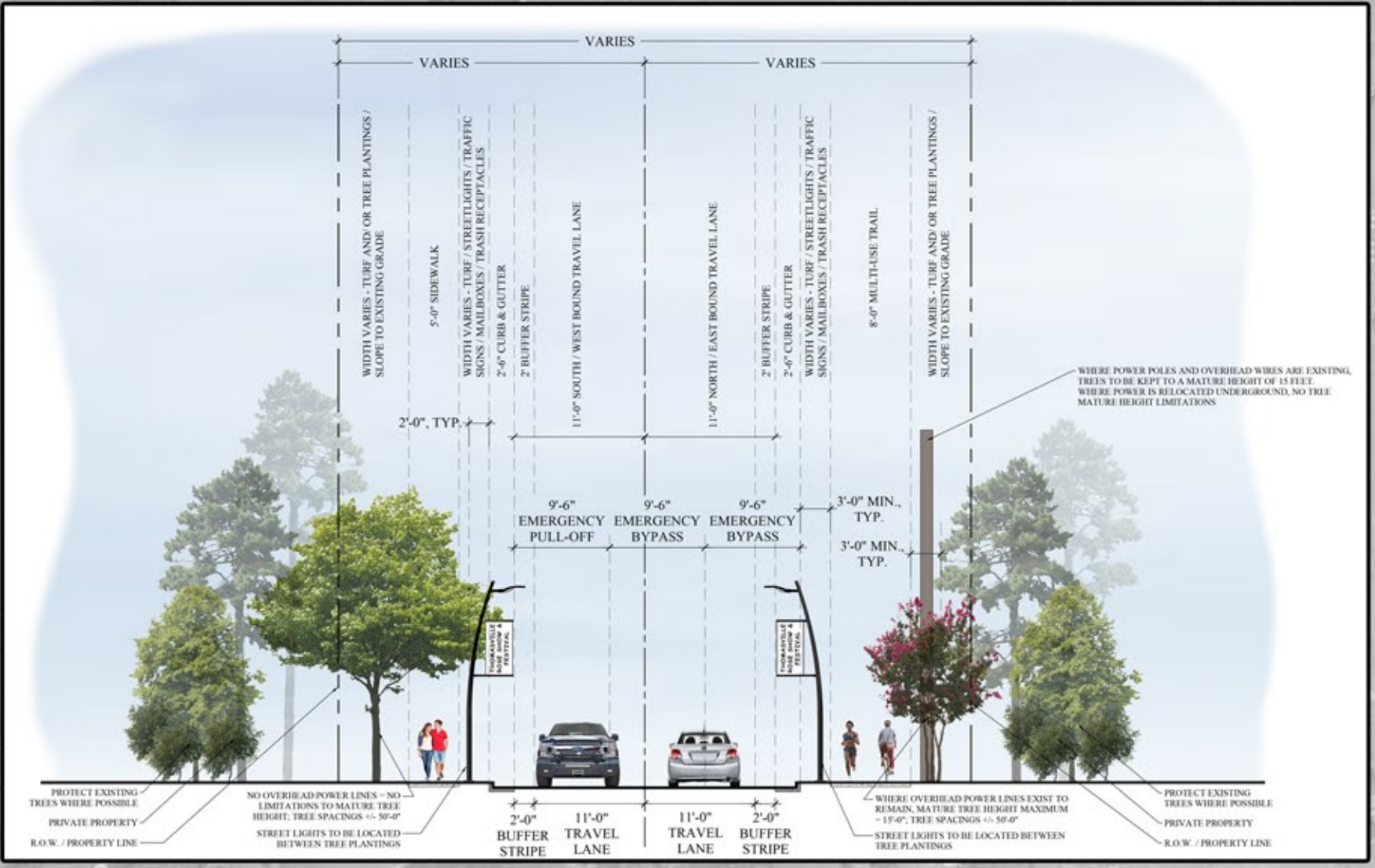
SCALE: 1" = 20' - 0" (1" = 40' - 0" IF PRINTED AT 11X17)



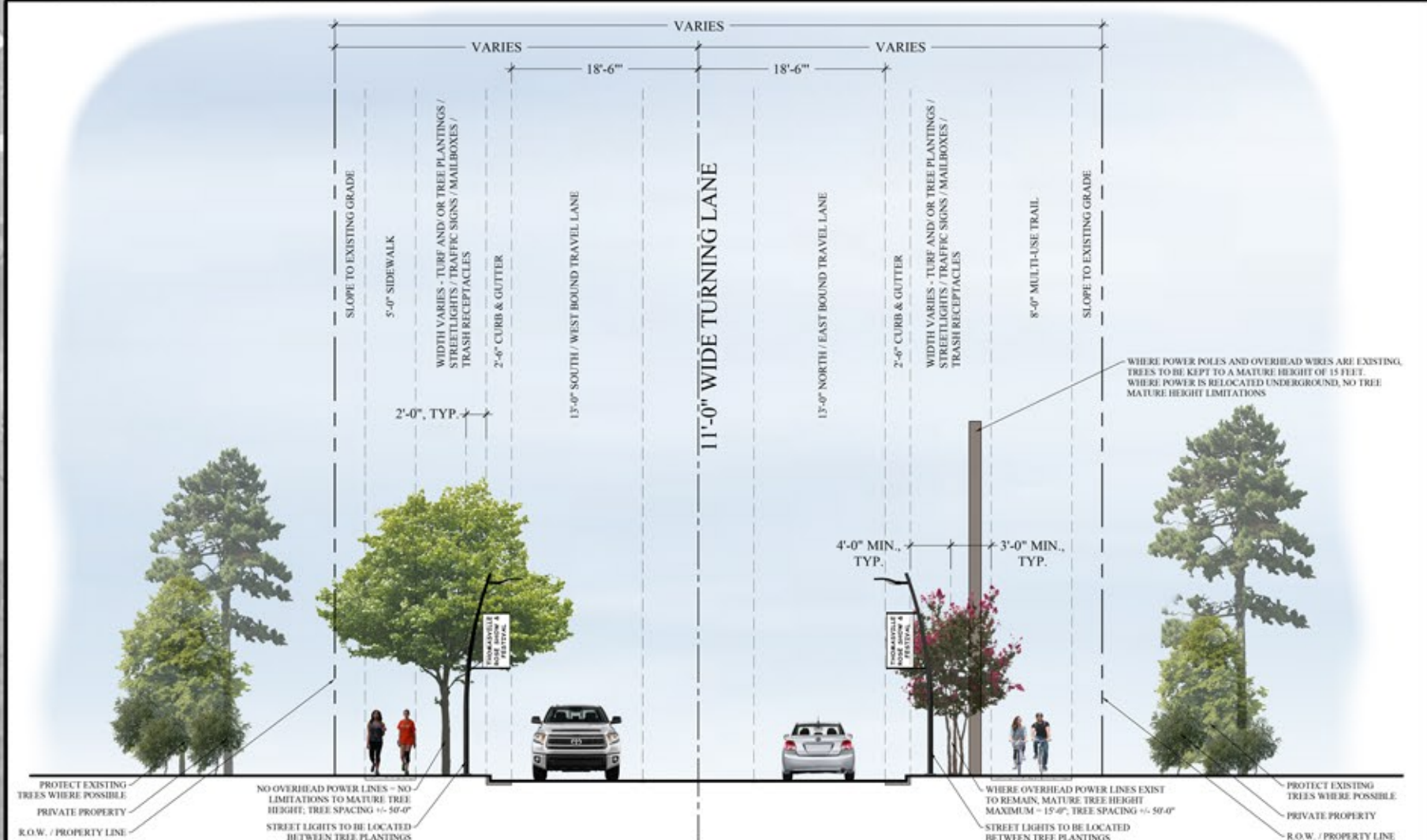


REMINGTON AVENUE STREETSCAPE

*DESIGN IS CONCEPTUAL & SUBJECT TO CHANGE.



SECTION A - A'
SCALE: 1" = 10'-0"



SECTION B - B'
SCALE: 1" = 10'-0"

SEE ENLARGEMENT FOR MORE INFORMATION

EXISTING TREE TO REMAIN, TYP.

IMPROVED DRIVEWAY ENTRANCE, TYP.

5' WIDE CONCRETE SIDEWALK, TYP.

SOD, TYP.

PROPOSED UNDERSTORY TREE, TYP.

IMPROVED DRIVEWAY ENTRANCE, TYP.

5' WIDE CONCRETE SIDEWALK, TYP.

PROPERTY LINE, TYP.

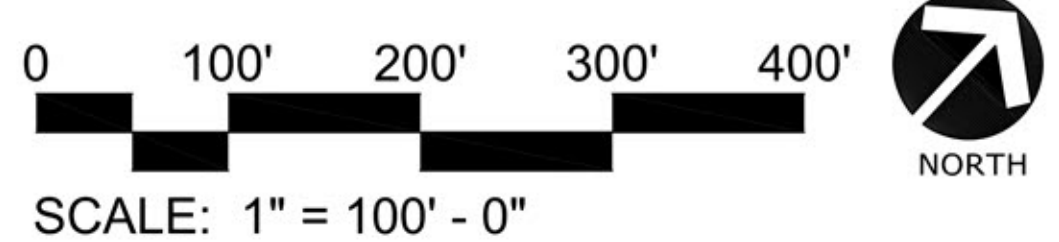
EXISTING TREES TO REMAIN, TYP.

PROPOSED OVERSTORY TREE, TYP.

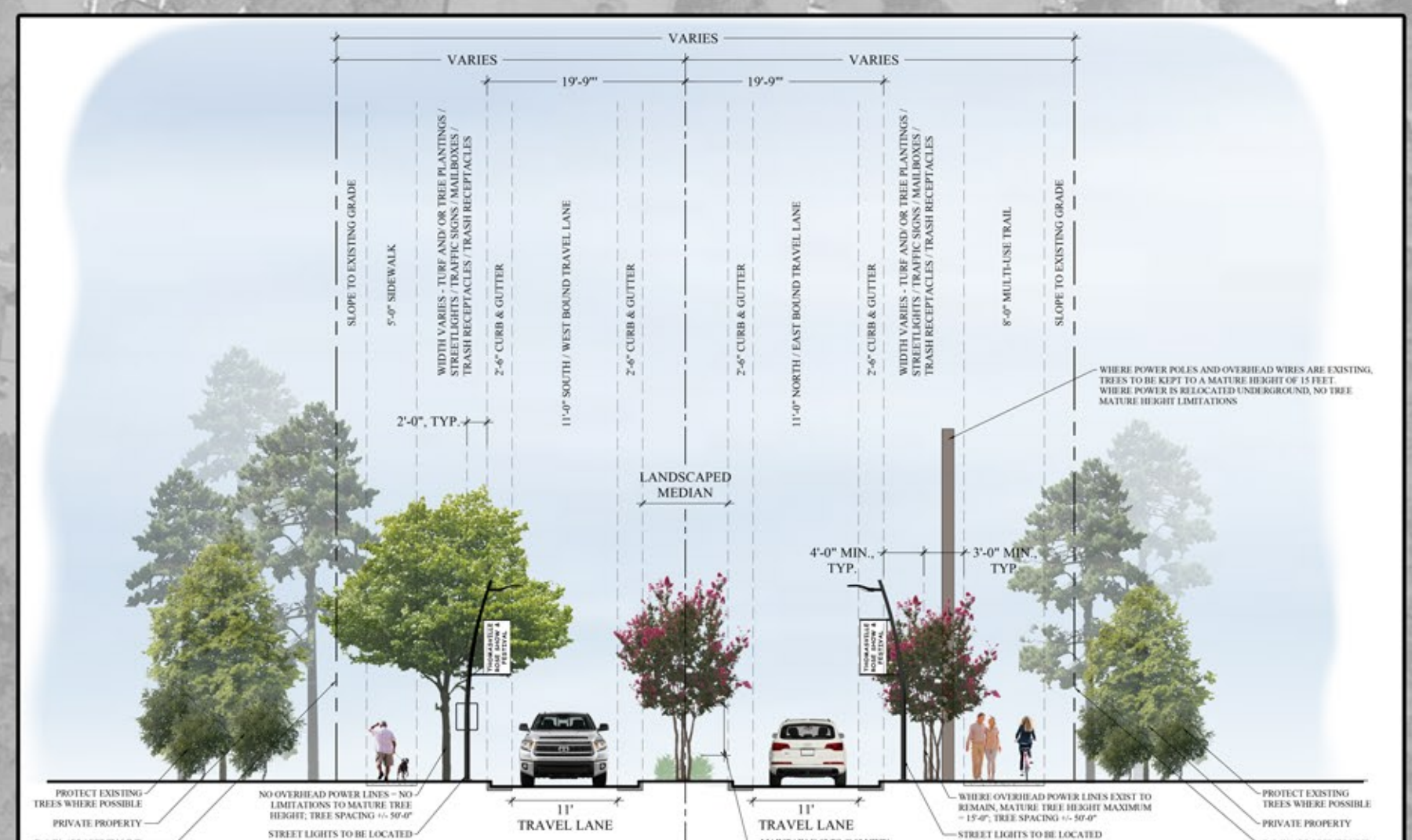
PROPOSED 8' WIDE MULTI-PURPOSE TRAIL, TYP.

CAREFUL PLACEMENT OF TRAIL TO PROTECT EXISTING CANOPY TREES TO REMAIN

OVERALL STREETSCAPE IMPROVEMENTS FOR REMINGTON AVENUE



SCALE: 1" = 100' - 0"



SECTION C - C'
SCALE: 1" = 10'-0"



ACCESS MANAGEMENT CONSIDERATIONS ENLARGEMENT
SCALE: 1" = 50'-0"

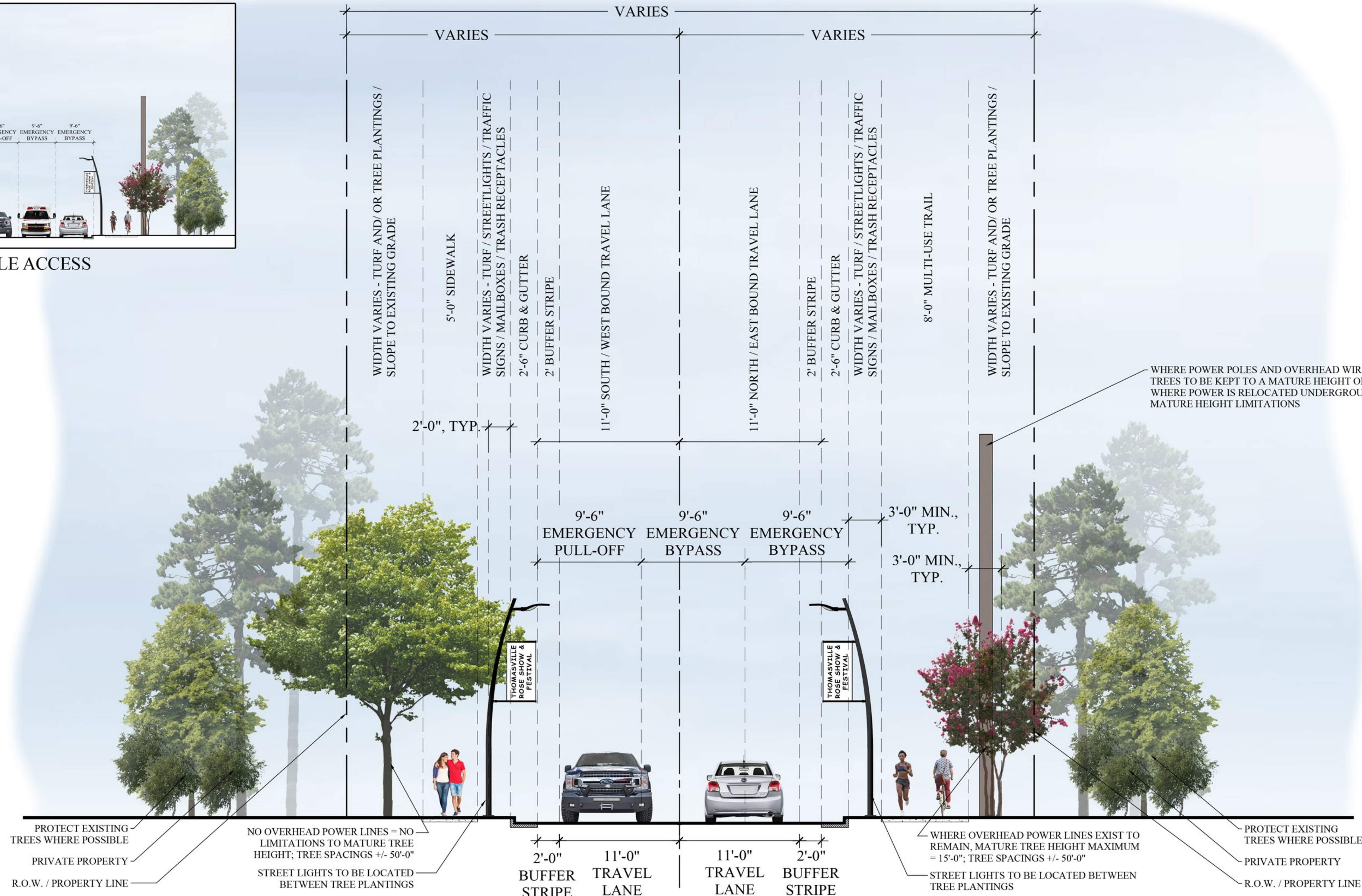
REMINGTON AVENUE STREETSCAPE

*DESIGN IS CONCEPTUAL & SUBJECT TO CHANGE.

30% PLANS
NOVEMBER 12, 2020



EMERGENCY VEHICLE ACCESS



PROPOSED TYPICAL SECTION A - A'



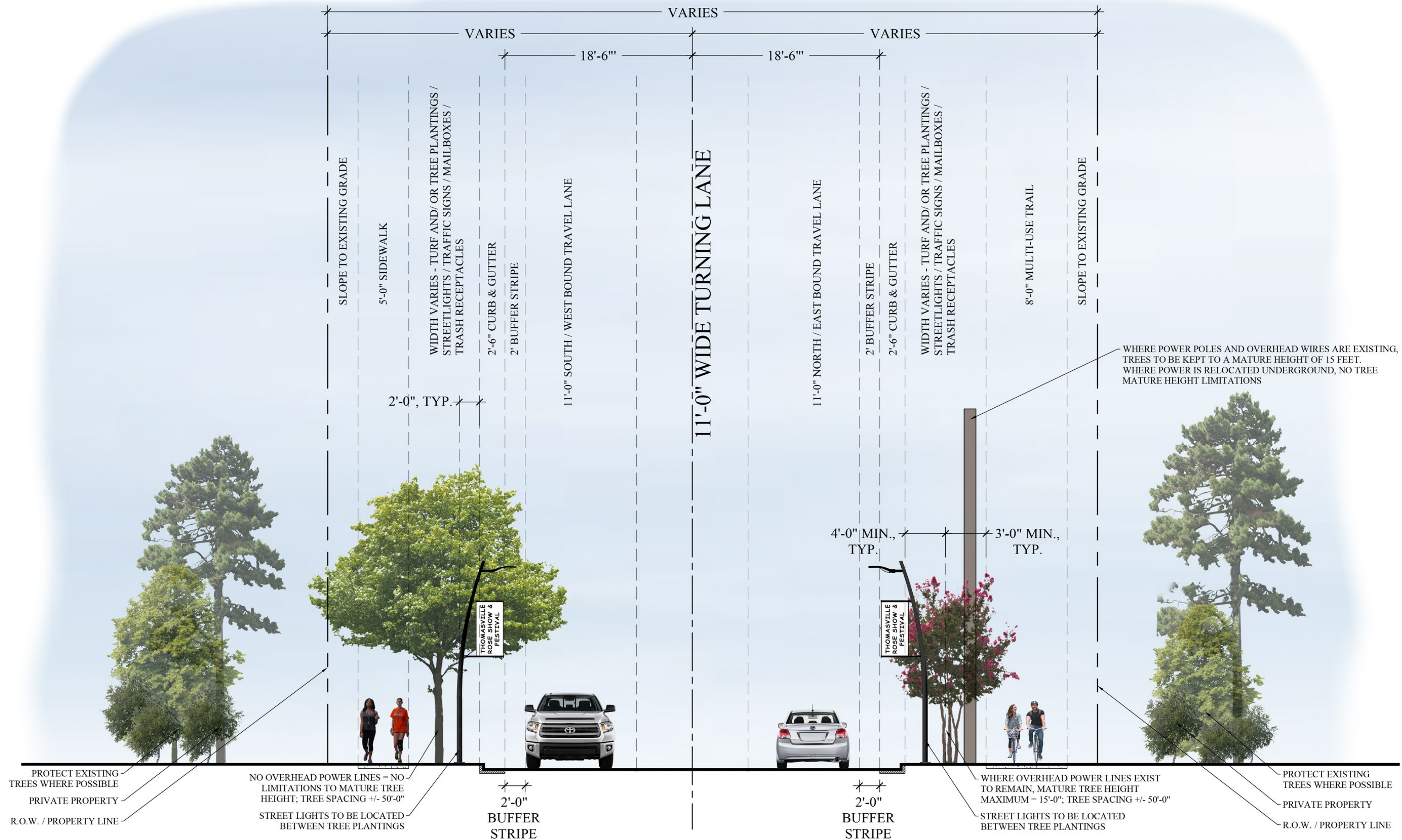
SCALE: 1" = 5' - 0" (1" = 10' - 0" IF PRINTED AT 11X17)



REMINGTON AVENUE STREETSCAPE

30% PLANS
NOVEMBER 12, 2020

*DESIGN IS CONCEPTUAL & SUBJECT TO CHANGE.



PROPOSED TYPICAL SECTION B - B'



SCALE: 1" = 5' - 0" (1" = 10' - 0" IF PRINTED AT 11X17)

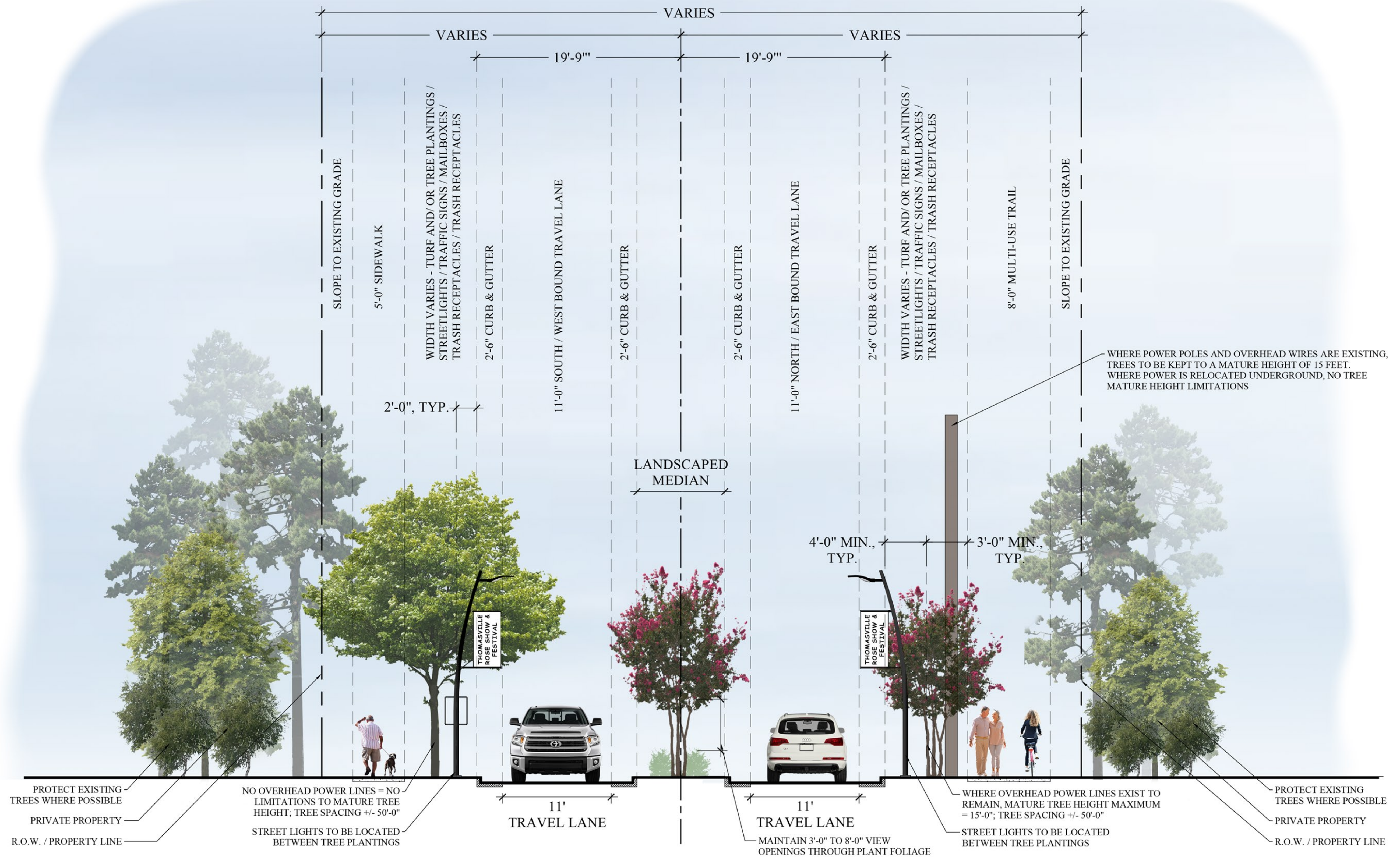


REMINGTON AVENUE STREETSCAPE

*DESIGN IS CONCEPTUAL & SUBJECT TO CHANGE.

30% PLANS

NOVEMBER 12, 2020



PROPOSED TYPICAL SECTION C - C'



SCALE: 1" = 5' - 0" (1" = 10' - 0" IF PRINTED AT 11X17)

